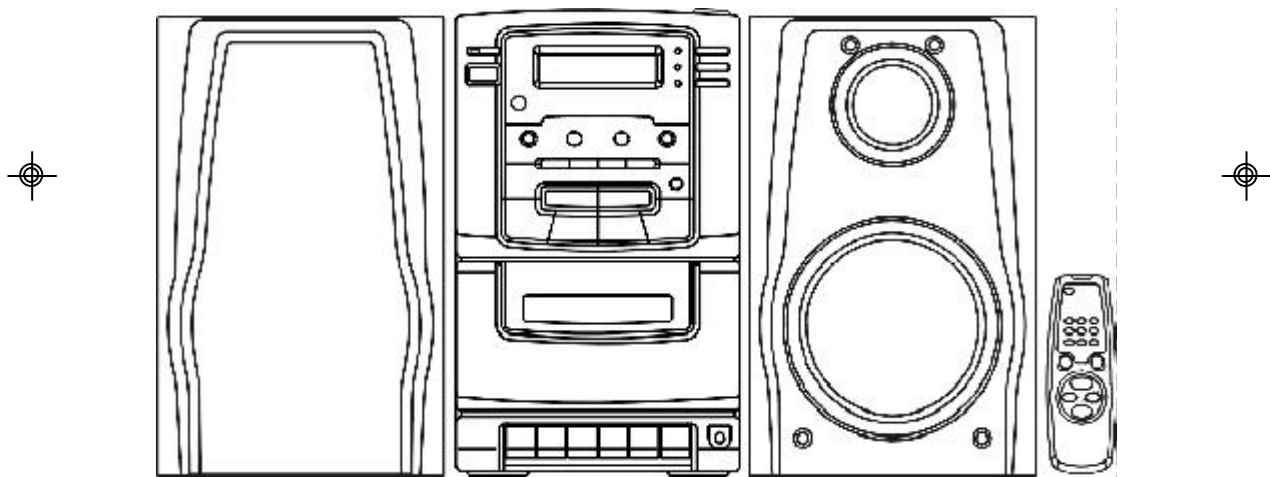




Memorex®

**DIGITAL AM/FM RADIO TOP LOADING CD
PLAYER STEREO CASSETTE RECORDER**

MODEL: MX3700



**BEFORE OPERATING THIS PRODUCT,
PLEASE READ THESE INSTRUCTIONS COMPLETELY**



WARNING:

To reduce the risk of fire or electric shock, do not expose it is appliance to rain or moisture.

CAUTION:

Use of controls or adjustments or performance of procedures other than those specified may result in hazardous radiation exposure.

CAUTION

RISK OF ELECTRIC SHOCK DO NOT OPEN

To reduce the risk of electric shock, do not remove cover (or back).
No user serviceable parts inside. Refer servicing to qualified service personnel



The lightning flash with arrowhead symbol within an equilateral symbol, with an equilateral triangle, is intended to alert user to the presence of uninsulated "dangerous voltage" within the products enclosure that may be of sufficient magnitude to constitute a risk of electric shock to persons



The exclamation point within an equilateral triangle is intended to alert the user to the presence of important operating and maintenace (servicing) instruction in the literature accompanying the appliance.



CAUTION

For Compact Disc Units only.



INVISIBLE LASER RADIATION WHEN OPEN AND INTERLOCK FAILED OR DEFEATED.
AVOID DIRECT EXPOSURE TO LASER BEAM.



IMPORTANT SAFEGUARDS

CAUTION :

- Read all of these instructions.
- Save these instructions for later use.
- Follow all warnings and instructions marked on the audio equipment.

1. READ INSTRUCTIONS

All the safety and operating instructions should be read before the product is operated.

2. RETAIN INSTRUCTIONS

The safety and operating instructions should be retained for future reference.

3. HEED WARNINGS

All warnings on the product and in the operating instructions should be adhered to.

4. FOLLOW INSTRUCTIONS

All operating and use instructions should be followed.

5. WATER AND MOISTURE

The product should not be used near water – for example, near a bathtub, washbowl, kitchen sink, laundry tub, in a wet basement, or near a swimming pool, etc.

6. CARTS AND STANDS

The product should be used only with a cart or stand that is recommended by the manufacturer.

- 6A. An appliance and cart combination should be moved with care. Quick stops, excessive force, and uneven surfaces may cause the appliance and cart combination to overturn.



7. WALL OR CEILING MOUNTING

The product should be mounted to a wall or ceiling as recommended by the manufacturer.

8. HEAT

The product should be situated away from heat sources such as radiators, heat registers, stoves, or other products (including amplifiers) that produce heat.

9. VENTILATION

The product should be situated so that its location or position does not interfere with its proper ventilation. For example, the product should not be situated on a bed, sofa, rug, or similar surface that may block the ventilation openings; or, placed in a built-in installation, such as a bookcase or cabinet that may impede the flow of air through the ventilation openings.

10. POWER SOURCES

The product should be connected to a power supply only of the type described in the operating instructions or as marked on the product.

11. GROUNDING OR POLARIZATION

Precautions should be taken so that the grounding or polarization means of a product is not defeated.

12. POWER-CORD PROTECTION

Power-supply cords should be routed so that they are not likely to be walked on or pinched by items placed upon or against them, paying particular attention to cords at plugs, convenience receptacles, and the point where they exit from the product.

13. CLEANING

The product should be cleaned only as recommended by the manufacturer.

14. POWER LINES

An outdoor antenna should be located away from power lines.

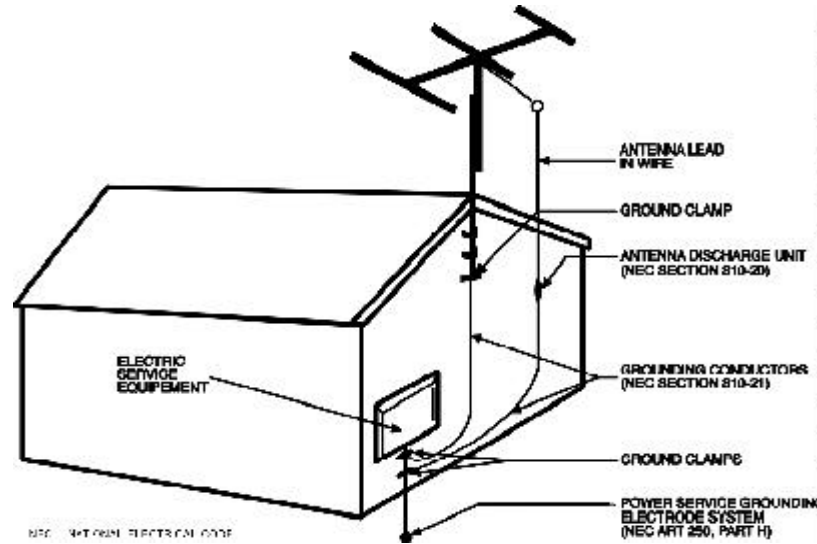




15. OUTDOOR ANTENNA GROUNDING

If an outside antenna is connected to the receiver, be sure the antenna system is grounded so as to provide some protection against voltage surges and built up static charges. Section 810 of the National Electrical Code, ANSI/NFPA 70 provides information with respect to proper grounding of the mast and supporting structure, grounding of the lead-in wire to an antenna discharge unit, size of grounding conductors, location of antenna-discharge unit, connection to grounding electrodes, and requirements for the grounding electrode. See Figure.

EXAMPLE OF ANTENNA GROUNDING AS PER NATIONAL ELECTRICAL CODE



16. NONUSE PERIODS

The power cord of the product should be unplugged from the outlet when left unused for a long period of time.

17. OBJECT AND LIQUID ENTRY

Care should be taken so that objects do not fall and liquids are not spilled into the enclosure through openings.

18. DAMAGE REQUIRING SERVICE

The product should be serviced by qualified service personnel when:

- A. The power-supply cord or the plug has been damaged; or
- B. Objects have fallen or liquid has been spilled into the product; or
- C. The product has been exposed to rain; or
- D. The product does not appear to operate normally or exhibits a marked change in performance; or
- E. The product has been dropped, or the enclosure damaged.

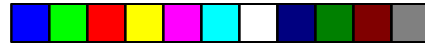
19. SERVICING

The user should not attempt to service the product beyond that described in the operating instructions. All other servicing should be referred to qualified service personnel.

20. NOTE TO CATV SYSTEM INSTALLER

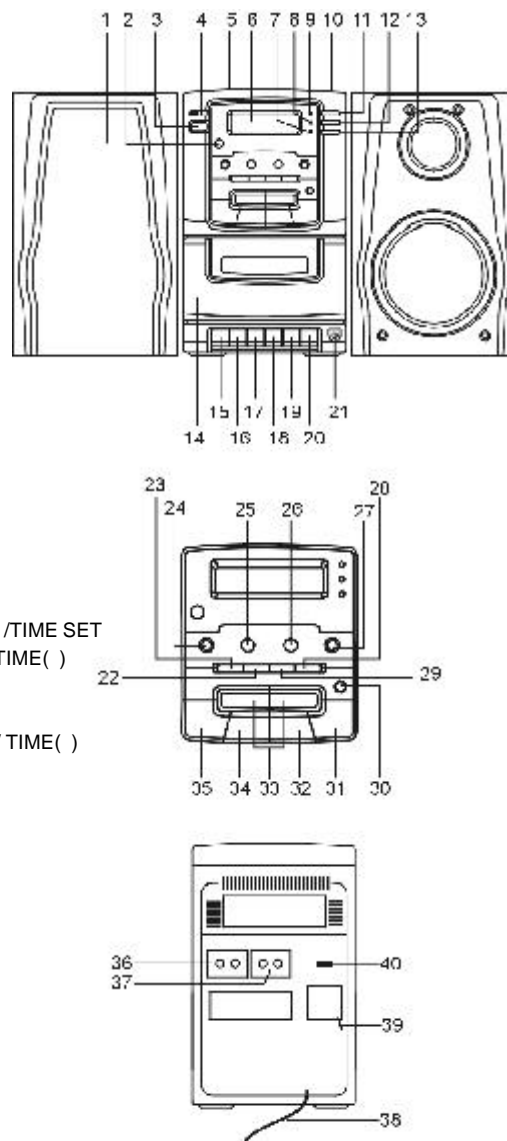
This reminder is provided to call the CATV system installer's attention to Article 820-40 of the NEC that provides guidelines for proper grounding and, in particular, specifies that the cable ground shall be connected to the grounding system of the building, as close to the point of cable entry as practical.

PRINTED IN HONG KONG



LOCATION OF CONTROLS

1. SPEAKER
2. REMOTE SENSOR
3. POWER BUTTON
4. STANDBY INDICATOR
5. CD DOOR
6. DISPLAY
7. CLASSIC INDICATOR
8. POP INDICATOR
9. ROCK INDICATOR
10. CD DOOR OPEN BUTTON
11. ROCK BUTTON
12. POP BUTTON
13. CLASSIC BUTTON
14. CASSETTE DOOR
15. RECORD KEY
16. PLAY KEY
17. REWIND KEY
18. FAST FORWARD KEY
19. STOP/EJECT KEY
20. PAUSE KEY
21. HEADPHONE JACK
22. REPEAT / M.UP BUTTON
23. CD PROGRAM/TUNER MEMORY BUTTON / TIME SET
24. TUNER DOWN/CD SKIP TRACK (BACK) / TIME ()
25. STOP BUTTON
26. PLAY/PAUSE BUTTON
27. TUNER UP/CD SKIP TRACK (FORWARD) / TIME ()
28. BAND SELECTOR
29. RANDOM BUTTON
30. CD SYNCHO DUBBING BUTTON
31. AUX BUTTON
32. TAPE BUTTON
33. VOLUME UP/DOWN BUTTON
34. TUNER BUTTON
35. CD BUTTON
36. SPEAKER JACKS (L/R)
37. AUX INPUT
38. AC POWER CORD
39. FM ANTENNA LEAD
40. FM MODE/BEAT CUT SELECTOR



CAUTION

USE OF CONTROLS OR ADJUSTMENTS OR PERFORMANCE OF PROCEDURES OTHER THAN THOSE SPECIFIED HEREIN MAY RESULT IN HAZARDOUS RADIATION EXPOSURE. THIS UNIT SHOULD NOT BE ADJUSTED OR REPAIRED BY ANYONE EXCEPT QUALIFIED SERVICE PERSONNEL.

PRESET EQUALIZER

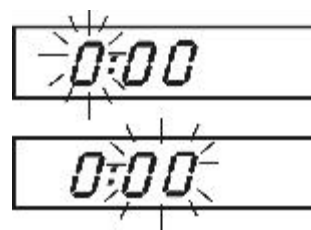
THE QUALITY OF TONE CAN BE ADJUSTED BY THE PRESET SOUND EQUALIZER WHICH HAS BEEN SET INTO 3 MODES (ROCK, POP CLASSIC). BY PRESSING THE CORRESPONDING EQ BUTTON YOU CAN CHOOSE ONE OF YOUR FAVORITE MODE ACCORDING TO YOUR MUSIC STYLE.





CLOCK SETTING

- SELECT TO TAPE/AUX PRESS THE PROGRAM/TIME SET BUTTON ONCE THE HOURS START FLASHING
- PRESS THE TUNING BUTTON (◀ OR ◻) TO ADJUST THE HOURS.
- PRESS THE PROGRAM/TIME SET BUTTON AGAIN. THE MINUTES START FLASHING.
- PRESS THE TUNING BUTTON (◀ OR ◻) TO ADJUST THE MINUTES.
- PRESS THE PROGRAM/TIME SET BUTTON OR WAIT A FEW SECONDS AND THE CLOCK WILL START RUNNING.



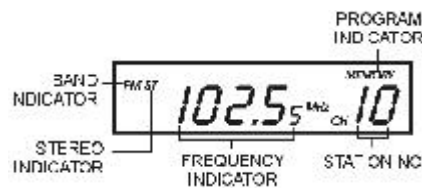
LISTENING TO RADIO

MANUAL TUNING

1. PRESS TUNER BUTTON TO SELECT TUNER MODE.
2. PRESS BAND BUTTON TO THE DESIRED BAND.
3. PRESS THE TUNING "UP" BUTTON OR "DOWN" BUTTON UNTIL DESIRED STATION IS REACHED.
4. ADJUST THE VOLUME CONTROL TO THE APPROPRIATE LEVEL AS DESIRED.

AUTO TUNING

1. FOLLOW STEPS 1,2 OF "MANUAL TUNING".
2. PRESS UP OR DOWN BUTTON CONTINUOUSLY TO START THE AUTOMATIC TUNING.
3. TO TERMINATE AUTO TUNING, PRESS THE UP OR DOWN BUTTON AGAIN.



PRESET STATIONS

THIS UNIT EQUIPPED 10 PRESET STATIONS FOR FM AND AM 10 STATIONS FOR AVAILABLE. ONCE THEY ARE PRESET, BROADCASTING CORRESPONDED TO THOSE CAN READILY BE ENJOYED BY SIMPLY PRESSING THE PRESET STATION BUTTON.

1. PRESS THE TUNER MODE.
2. YOUR DESIRED STATION CAN BE RECEIVED BY "MANUAL TUNING" OR "AUTO TUNING".
3. PRESS THE MEMORY / PROGRAM BUTTON, TO ENABLE PROGRAM STATE.
4. PRESS THE M-UP / REPEAT BUTTON, TO ADJUST PRESET STATION NUMBER.
5. FREQUENCY IS WRITTEN IN THE PRESET MEMORY BY PUSHING MEMORY / PROGRAM BUTTON ONCE AGAIN.
6. REPEAT STEP 2 TO STEP 5 TO ENTER ADDITIONAL CHANNELS INTO PROGRAM.
7. TO RETURN NORMAL TUNER MODE, LEAVE KEYS FREE.

* REMARKS: THERE ARE 5 SECONDS FOR PROGRAM STATE. AFTER 5 SEC. THIS STATE WOULD RELEASE AUTOMATICALLY.



CALLING THE PRESET STATIONS

PRESS THE M-UP/ REPEAT KEY TO SELECT THE PRESET STATION IN ORDER.

FM & FM-STEREO RECEPTION

- SET FM MODE SELECTOR AT "MONO" POSITION, PROGRAMS ARE RECEIVED IN MONO MODE. IN PARTICULAR WHEN STEREO SIGNALS ARE WEAK, IT IS PREFERABLE TO RECEIVE THE PROGRAM IN MONO.
- SET FM MODE SELECTOR AT "STEREO" POSITION FOR RECEIVING STEREO PROGRAMS.

PLAYING COMPACT DISC

GETTING START

1. PRESS THE CD MODE. PRESS THE CD DOOR OPEN BUTTON AND PUT A DISC INTO THE COMPACT DISC COMPARTMENT, THEN CLOSE THE COMPARTMENT.
2. THE DISPLAY WILL SHOW "00" FOR A FEW SECONDS, THEN THE TOTAL NUMBER OF TRACKS AND THE TOTAL PLAYING TIME OF THE DISC.
3. "DISC" WILL BE DISPLAYED WHEN THERE IS NO DISC INSIDE THE COMPARTMENT.



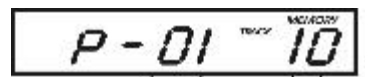
GENERAL OPERATION

- PLAY/PAUSE BUTTON** PRESS ONCE TO START PLAY, PRESS ONCE AGAIN TO STOP THE DISC PLAY TEMPORARILY. WHEN CD PLAYER IS PAUSED, DISPLAY IS BLINKING.
- STOP BUTTON** PRESS TO STOP PLAY.
- SKIP BUTTON** PRESS ONCE TO SKIP TO NEXT TRACK OR BACK TO PREVIOUS TRACK.
- UP/ AND DOWN/ AND RANDOM PLAY** PRESS CONTINUOUSLY TO EXECUTE REW / F.F. RELEASED TO TERMINATE REW / F.F.
- RANDOM PLAY** PRESS ONCE, THE DISPLAY WILL SHOW A "RANDOM". PRESS THE PLAY BUTTON TO PLAY THE DISC IN RANDOM ORDER. WHEN CD IS PLAYING IN RANDOM MODE, PRESS UP/ TO SELECT ANOTHER TRACK RANDOMLY. PRESS THE RANDOM BUTTON AGAIN TO TERMINATE THE RANDOM DISPLAY.

**DURING CD PLAY, RANDOM PLAY IS STARTED BY PRESSING THE RANDOM BUTTON ONCE. IF RANDOM FUNCTION IS SELECTED WHEN PROGRAM EXIST, RANDOM FUNCTION CAN NOT BE SET AND RANDOM IS FLASHING. (FLASHING MEANS "PROGRAM MEMORY IS EXIST")*

PROGRAMMED PLAY

UP TO 20 TRACKS CAN BE PROGRAMMED FOR DISC PLAY IN ANY ORDER. BEFORE USE, BE SURE TO PRESS THE STOP BUTTON.



PROGRAM NO. STATION NO.

1. PRESS THE CD BUTTON.
2. PRESS THE MEMORY PROGRAM BUTTON, THE DISPLAY WILL SHOW BLINKING "TRACK" AND "MEMORY". MOREOVER, IT WILL INDICATE PROGRAM NO. AND DIGITS FOR TRACK NO. TO BE PROGRAMMED.
3. SELECT A DESIRED TRACK BY USING THE SKIP BUTTONS.
4. PRESS THE MEMORY/PROGRAM BUTTON TO ENTER THE TRACK INTO THE PROGRAM.
5. REPEAT STEP 2 AND 3 TO ENTER ADDITIONAL MEMORIES INTO THE PROGRAM, IF NECESSARY.
6. WHEN ALL THE ORDER YOU HAVE PROGRAMMED PRESS PLAY/PAUSE BUTTON TO PLAY THE DISC IN THE ORDER YOU HAVE PROGRAMMED, THE DISPLAY WILL SHOW THE PROGRAM INDICATOR "MEMORY" TO IDENTIFY THIS FUNCTION.
7. PRESS STOP BUTTON TO TERMINATE PROGRAM PLAY.

*** REMARKS:** *THERE ARE 5 SECONDS FOR MEMORY WRITING ENABLE STATE, AFTER THAT THE STATE WOULD RELEASED AUTO MAGICALLY.*

NOTE:

- (1) THE PROGRAM MEMORY WILL BE CLEARED WHEN THE POWER BUTTON IS SET TO "OF" ,WHEN CD MODE IS CHANGED TO OTHER MODES, OR WHEN EJECT BUTTON IS PRESSED.
- (2) DURING PROGRAM PLAY, PRESS UP/ [] BUTTON TO SELECT THE PROGRAMMED TRACK IN ORDER.
- (3) PROGRAM REPEAT
YOU CAN REPEAT ALL PROGRAMMED TRACKS ENDLESSLY BY THIS FUNCTION.
 1. FOLLOW STEP 1 TO STEP 5 IN PROGRAM PLAY.
 2. PRESS M-UP/REPEAT BUTTON.
 3. TO CANCEL REPEAT PLAY , PRESS THE M-UP / REPEAT BUTTON AGAIN.

REPEAT PLAY

SINGLE TRACK REPEAT PLAY (ONLY AVAILABLE FOR NORMAL PLAYING)

YOU CAN REPEAT A PARTICULAR TRACK OF THE DISC ENDLESSLY BY THIS FUNCTION.

1. SELECT A DESIRED TRACK BY SKIP BUTTONS
2. PRESS M-UP/REPEAT BUTTON TWICE.
3. THE DISPLAY WILL SHOW A FLASHING "REPEAT" ,AND REPEAT FUNCTION WOULD BE INITIALIZED.
4. PRESS PLAY/PAUSE BUTTON TO START.
5. TO CANCEL REPEAT PLAY. PRESS THE M-UP / REPEAT BUTTON ONCE AGAIN.

*** REMARKS:** *TO REPEAT THE TRACK THAT IS PLAYING .PRESS THE M-UP/REPEAT BUTTON TWICE. ALL TRACKS REPEAT PLAY (AVAILABLE FOR BOTH NORMAL PLAYING AND PROGRAMMED PLAYING)*

YOU CAN REPEAT THE ENTIRE DISC ENDLESSLY BY THIS FUNCTION.

1. PRESS M-UP / REPEAT BUTTON ONCE.
2. THE DISPLAY WILL SHOW "REPEAT".
3. PRESS PLAY / PAUSE BUTTON TO START.
4. TO CANCEL REPEAT PLAY ,PRESS THE M-UP / REPEAT BUTTON TWICE.



LISTENING TO TAPE

GENERAL OPERATION

STOP/EJECT KEY	PRESS TO STOP ALL DECK OPERATIONS. PRESS AGAIN TO THE CASSETTE DOORS.
FAST FORWARD KEY & FAST REWIND KEY	PRESS TO START RAPID TAPE WINDING IN EITHER FORWARD OR REVERSE DIRECTION. PRESS STOP/EJECT KEYS WHEN THE CASSETTE SPOOLS STOP TURNING.
PLAY KEY	PRESS TO START TO START PLAYING A TAPE .
PAUSE KEY	PRESS TO STOP TAPE OPERATION TEMPORARILY . PRESS AGAIN TO RESUME TAPE OPERATION.
RECORD KEY	PRESS TOGETHER WITH PLAY KEY TO START RECORDING.

PLAYBACK

- PRESS THE TAPE BUTTON.
- PUT IN YOUR CASSETTE TAPE .
- PRESS PLAY KEY TO ACTIVATE PLAYBACK.
- ADJUST THE VOLUME CONTROL TO THE DESIRED LEVEL.
- USE PAUSE KEY WHEN YOU WANT TO STOP PLAYBACK TEMPORARILY .
- PRESS STOP/EJECT KEY WHEN FINISHED.

RECORDING

A. RECORDING FROM RADIO

- PRESS THE TUNER BUTTON.
- TUNE IN YOUR STATION AND PUT IN YOUR CASSETTE TAPE.
- PRESS RECORD KEY AND THE PLAY KEY OF DECK AT THE SAME TIME TO START RECORDING
- PRESS STOP / EJECT KEY WHEN FINISHED. NOTED: IF BEAT NOISE IS PRESENT WHEN RECORDING. ADJUST THE POSITION OF THE BEAT CUT SWITCH ON REAR PANEL (FOR AM BAND ONLY).

B. RECORDING FROM A COMPACT DISC

1. PRESS THE CD SYNCHRO MODE BUTTON TO "OFF"
2. PRESS CD BUTTON AND LOAD THE CD TO BE RECORDED.
3. LOAD A BLANK CASSETTE TAPE .
4. PRESS THE PAUSE BUTTON, THEN PRESS THE REC BUTTON.
RECORDING FUNCTION IS STAND BY.
5. SELECT THE TRACK NUMBER IF REQUIRED. FOR PROGRAMMED RECORDING, (AS DESCRIBED UNDER PROGRAMMED PLAY OF CD).
6. ACTIVATE THE CD PLAYER, AND THEN PRESS (TO RELEASE)THE PAUSE BUTTON TO START RECORDING.
7. TO STOP RECORDING, PRESS THE STOP BUTTON OF CD PLAYER AT FIRST ,AND PRESS THE STOP/EJECT BUTTON OF THE TAPE DECK.

SYNCHRONOUS RECORDING

(CD - TAPE SYNCHRONOUS DUBBING)

THIS RECORDING SYSTEM STARTS DISC PLAY AND CASSETTE RECORDING AT THE SAME TIME.

■ ON: PRESS THE CD SYNCHRO. MODE BUTTON .THE CD SYNCHRO. DUBBING IS "ON".

■ OFF: RELEASE THE CD SYNCHRO. MODE BUTTON. THE CD SYNCHRO. DUBBING IS "OFF".

RECORDING FROM TRACK NO.1

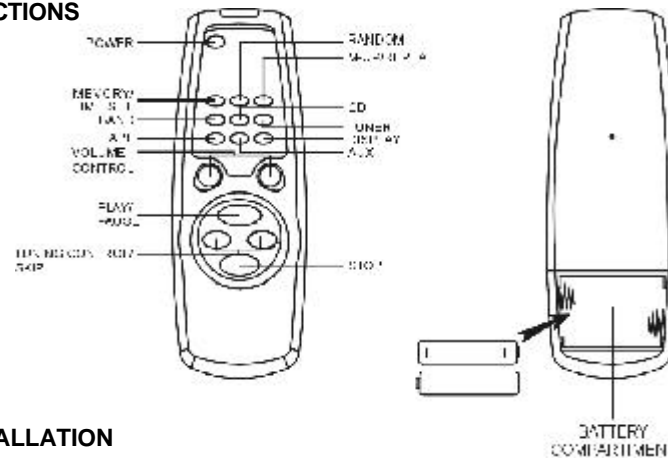
1. PRESS THE CD SYNCHRO MODE BUTTON TO "ON"
2. PRESS CD BUTTON AND LOAD A DISC INTO THE CD PLAYER.
3. PLAY THE TRACK PREPARED FOR RECORDING.
4. PRESS RECORD KEY AND THE PLAY KEY AT THE SAME TIME OF THE CASSETTE DECK TO





- START RECORDING. CD PLAYER RESTARTS TO PLAY THE TRACK AT THE BEGINNING AUTOMATICALLY.
5. TO PAUSE RECORDING, PRESS STOP/EJECT KEY OF THE CASSETTE DECK. THE CD PLAYER PAUSE SIMULTANEOUSLY.
 6. PRESS BOTH RECORD KEY AND THE PLAY KEY OF THE CASSETTE DECK AGAIN TO CONTINUE RECORDING.
 7. TO FINISH RECORDING, STOP PLAYING CD ,PRESS STOP/EJECTS KEY OF THE CASSETTE DECK.

**REMOTE CONTROL TRANSMITTER
CONTROL FUNCTIONS**



BATTERY INSTALLATION

THE INFRARED TRANSMITTER REQUIRES 3.0 VOLTS FOR OPERATION.

BUTTON DESCRIPTION

- | | |
|----------------|--|
| PLAY/PAUSE | - IN CD MODE, PRESS ONCE TO START PLAYBACK. PRESS ONCE AGAIN TO STOP THE DISC PLAY TEMPORALLY. |
| STOP | - PRESS TO TERMINATE CD PLAYBACK. |
| TUNER | - PRESS TO SELECT TUNER MODE. |
| TAPE | - PRESS TO SELECT TAPE MODE. |
| CD | - PRESS TO SELECT CD MODE. |
| AUX | - PRESS TO SELECT AUX MODE. |
| BAND | - PRESS TO SELECT TUNER BAND. |
| MEMORY | - PRESS TO ENABLE PROGRAM STATE FOR TUNER OR CD . |
| RANDOM | - PRESS TO ENABLE RANDOM PLAY FOR CD |
| M-UP (REPEAT) | - IN TUNER MODE ,PRESS TO SELECT THE PRESET STATION IN ORDER. IN CD MODE ,PRESS TO ENABLE REPEAT PLAY. |
| TUNING/SKIP(-) | - IN TUNER MODE ,PRESS TO PREVIOUS TRACK. PRESS CONTINUOUSLY TO EXECUTE REW. IN TUNER MODE, THIS BUTTON CAN BE USED FOR AUTO DOWN TUNING OR MANUAL DOWN TUNING. |
| TUNING/SKIP(+) | - IN CD MODE, PRESS ONCE , PRESS ONCE TO SKIP TO NEXT TRACK. PRESS CONTINUOUSLY TO EXECUTE FWD. IN TUNER MODE ,THIS BUTTON CAN BE USED FOR AUTO UP TUNING OR MANUAL UP TUNING. |
| POWER | - TO TURN THE UNIT ON OR STAND BY. |
| VOLUME(+/-) | - INCREASE (+) OR DECREASE (-)THE VOLUME. |
| DISPLAY | - IN THE TUNER MODE: FREQUENCY DISPLAY → CLOCK DISPLAY
- IN THE CD MODE: PLAYING TIME DISPLAY → REMAINING TIME DISPLAY
→ CLOCK |



SPECIFICATION

POWER SOURCE

AC: 120V-60Hz

RADIO FREQUENCY COVERAGE

FM: 87.5-108MHz
AM: 520-1710kHz

RECORDING SYSTEM

RECORDING SYSTEM AC BIAS
ERASING SYSTEM MAGNETIC ERASE

GENERAL

SPEAKER 4Ohms
POWEROUTPUT 5WATT AT 10% T.H.D. PER CHANNEL
HEADPHONES: 3.5mm STEREO JACK PLUG, 8-32Ω

CD PLAYER

PICK UP: 3-BEAM, SEMICONDUCTOR LASER
ENCODING: 1-BIT LINEAR 8 X OVERSAMPLING



TROUBLESHOOTING GUIDE

BEFORE REQUESTING SERVICE, PLEASE REFER TO THE FOLLOWING CHART FOR THE SYMPTOM AND POSSIBLE SOLUTION.

SYMPTOMS	POSSIBLE CAUSES	POSSIBLE SOLUTIONS
CD PLAYER		
CD PLAYER WILL NOT OPERATE	FUNCTION SELECTOR SWITCH NOT SET TO CD POSITION	SET FUNCTION SELECTOR SWITCH TO CD POSITION.
	CD NOT INSTALLED OR INSTALLED UPSIDE DOWN.	INSERT CD WITH LABEL SIDE UP.
CD SKIP WHILE PLAYING.	DISC IS <i>DIRTY</i> OR SCRATCHED.	WIPE DISC WITH A SOFT CLOTH OR TRY ANOTHER DISC.
RADIO		
FM STEREO INDICATOR DOESN'T LIGHT	STATION NOT PROPERLY TUNED.	RETUNE THE FM STATION.
	BAND/FM MODE SWITCH IS SET TO FM POSITION OR STATION IS BROADCASTING IN MONO.	SET BAND/FM MODE SWITCH TO FM STEREO POSITION OR TUNE TO A STEREO BROADCAST STATION.
NOISE OR SOUND DISTORTED ON AM OR FM BROADCASTS	FM PIGTAIL ANTENNA NOT EXTENDED OR WEAK STATION.	FM – EXTEND THE PIGTAIL ANTENNA. AM – ROTATE UNIT UNTIL BEST RECEPTION IS OBTAINED.
NO SOUND	STATION NOT PROPERLY TUNED.	RETUNE AM OR FM STATION.
	FUNCTION SELECTOR SWITCH NOT SET TO RADIO POSITION.	SET FUNCTION SELECTOR SWITCH RADIO POSITION.
	VOLUME CONTROL IS AT MINIMUM POSITION.	INCREASE VOLUME.
CASSETTE		
NO SOUND	FUNCTION SELECTOR SWITCH NOT SET TO TAPE POSITION.	SET FUNCTION SELECTOR SWITCH TO TAPE POSITION.
	NO RECORDING ON TAPE.	CHECK CASSETTE.
CASSETTE DOES NOT PLAY THE PLAYBACK	PLAY BUTTON IS NOT PRESSED OR THE TAPE MUST BE REWIND.	PRESS THE PLAY BUTTON OR REWIND THE TAPE.
SOUND DISTORTION OR SLOW ERRATIC SPEED.	DIRTY HEAD, TAPE TOO OLD OR WORN OUT.	CLEAN THE HEAD OR REPLACE PRE-RECORDED CASSETTE TAPE.
WEAK OR DISTORTED RECORDING.	CASSETTE TAPE IS POOR QUALITY OR BATTERIES ARE WEAK.	CHANGE TO ANOTHER CASSETTE TAPE. CHECK BATTERIES.
GENERAL		
NO SOUND	AC CORD NOT CONNECTED PROPERLY OR WEAK OR DEAD BATTERIES.	CHECK AC CORD CONNECTIONS OR REPLACE WEAK OR DEAD BATTERIES.
	HEADPHONE PLUGGED INTO PHONE JACK.	REMOVE HEADPHONE PLUG FROM JACK.
	VOLUME CONTROL SET TO MINIMUM.	INCREASE THE VOLUME

Customer Service : 1-800-919-3647



Memorex®
LIMITED WARRANTY
AUDIO

We at **MEMOREX** believe you will be pleased with your new Product. Please read this Warranty carefully. Memorex warrants this product to be free from manufacturing defects including original parts and workmanship for a period of ninety (90) days from the date of original purchase in, and if used in, the United States.

Should you find your unit is not operating properly during the terms of full coverage of this warranty, ninety (90) days, you should contact your original place of purchase for an exchange with a valid receipt. If necessary, Memorex will provide one of the following options (at Memorex's discretion), providing the manufacturing defect is verified along with the date of purchase.

- Repair service for ninety (90) days from date of original purchase at no charge for labor and parts at their authorized warranty service facility, providing the manufacturing defect is verified along with the date of purchase.
- Replacement of defective unit with either a new, refurbished, or equivalent model at no charge for ninety (90) days from date of original purchase.

This warranty is void if the product is:

- A) Damaged through negligence, abuse, misuse, accident, or acts of God.
- B) Used in commercial applications or rentals.
- C) Modified or repaired by anyone other than Memorex or their expressly authorized representative.
- D) Damage resulting from the improper connection to equipment of other manufacturers.

This warranty does not cover:

- A) Cost incurred in the shipping of the product to and from the Memorex authorized repair facility listed.
- B) Damage or improper operation caused by the failure to follow the operating instructions provided with the product.
- C) Routine adjustments to the product, which can be performed by the customer as outlined in the owner's manual.
- D) Signal reception problems caused by external factors.
- E) Products not purchased in the United States.
- F) Damage to the products used outside the United States.
- G) Damage to audiocassette tapes.
- H) Damage to Compact Discs.

In the event that service is required under this warranty, please contact CUSTOMER SERVICE at 1-800-919-3647 or contact our website at www.memorex.com.

THIS WARRANTY IS NON-TRANSFERABLE AND APPLIES SOLELY TO THE ORIGINAL PURCHASER AND DOES NOT EXTEND TO SUBSEQUENT OWNERS OF THE PRODUCT. ANY APPLICABLE IMPLIED WARRANTIES, INCLUDING THE WARRANTY OF MERCHANTABILITY, ARE LIMITED IN DURATION TO A PERIOD OF THE EXPRESSED WARRANTY AS PROVIDED HEREIN BEGINNING WITH THE DATE OF THE ORIGINAL PURCHASE AT RETAIL AND NO WARRANTIES, WHETHER EXPRESSED OR IMPLIED SHALL APPLY TO THE PRODUCT THEREAFTER. MEMOREX MAKES NO WARRANTY AS TO THE FITNESS OF THE PRODUCT FOR ANY PARTICULAR PURPOSE OR USE. THE EXTENT OF MEMOREX'S LIABILITY UNDER THIS LIMITED WARRANTY IS THE REPAIR OR REPLACEMENT PROVIDED ABOVE AT THE SOLE DISCRETION OF MEMOREX. IN NO EVENT SHALL MEMOREX'S LIABILITY EXCEED THE PURCHASE PRICE PAID BY THE PURCHASER. UNDER NO CIRCUMSTANCES SHALL MEMCORP BE LIABLE FOR ANY LOSS, DIRECT, INDIRECT, INCIDENTAL, FORESEEN, UNFORESEEN, SPECIAL, OR CONSEQUENTIAL DAMAGE ARISING OUT OF OR IN CONNECTION WITH THE USE OF THIS PRODUCT. THIS WARRANTY IS VALID ONLY IN THE UNITED STATES. THIS WARRANTY GIVES YOU SPECIFIC LEGAL RIGHTS, HOWEVER, YOU MAY HAVE OTHER RIGHTS WHICH MAY VARY FROM STATE TO STATE. SOME STATES DO NOT ALLOW LIMITATIONS ON IMPLIED WARRANTIES OR EXCLUSION OF CONSEQUENTIAL DAMAGE, THEREFORE THESE RESTRICTIONS MAY NOT APPLY TO YOU.

© 2000, Memorex is a registered trademark of Memorex Telex N.V.



MEMCORP Inc.
7145 West 20 th Avenue Hialeah, FL 33014 U.S.A.
© 2000, Memorex is a trademark of Memorex Telex. N.V.
Printed in Hong Kong
Visit Our Website : www.Memorex.com